



Brisk Logistics International Ltd.

Your navigator in the world of trade.



Brisk Logistics International Ltd.

Your navigator in the world of trade.



Brisk Logistics Int'l Ltd. is a high proficiency, being led by owner who has working experience more than 23 years with a world's most renowned company American President Lines (APL), 6 years in the mid management and 8 years in the senior management level. It's a Bangladeshi Logistics Service Provider with a Global Reach, cost efficient, Sea, Air, Surface and comprehensive range of value added service . Managing Director: Monoar Hossain has 23 years working experience in a multinational Shipping Lines.



Brisk Logistics International Ltd.

Your navigator in the world of trade.



Director Operation:

Mahmudul Hassan has been working as a Garment Shop Enterprenuer (1997-2000), Chain Multimedia Agency (2000 -2007), Multinational Freight Forwarding company (2007-2014). Brisk Logistics as Director (2014- Till Date)



Director Business Development:

Mahbub Alam has been working as a Media Organizer (1997-2002), Telecommunication Agency as Coordinator (2002-2007) , Multinational Freight Forwarding company (2007-2014). Brisk Logistics as Director (2014- Till Date).

WHY US

We build genuine relationships fostered on understanding, openness and honesty.

Understanding



We believe in consultative and collaborative approach that will deliver measurable and sustainable outcomes to your business.

Collaboration



We want to work with you to help you to achieve desired results.

Results



Full Range of Services

- » Ocean/NVOCC (FCL & LCL) Forwarding
- » Air Freight Forwarding
- » Customs Brokerage & Compliance
- » Cargo Consolidation & Deconsolidation
- » P.O. & Vendor Management
- » Land Transport & Truck Brokerage
- » Warehousing / Cargo Handling / Distribution
- » Specialty Cargo (Out of gauge, refrigerated, GOH, etc.)
- » Project Logistics & Management
- » Logistics & Compliance Consulting

OPERATION

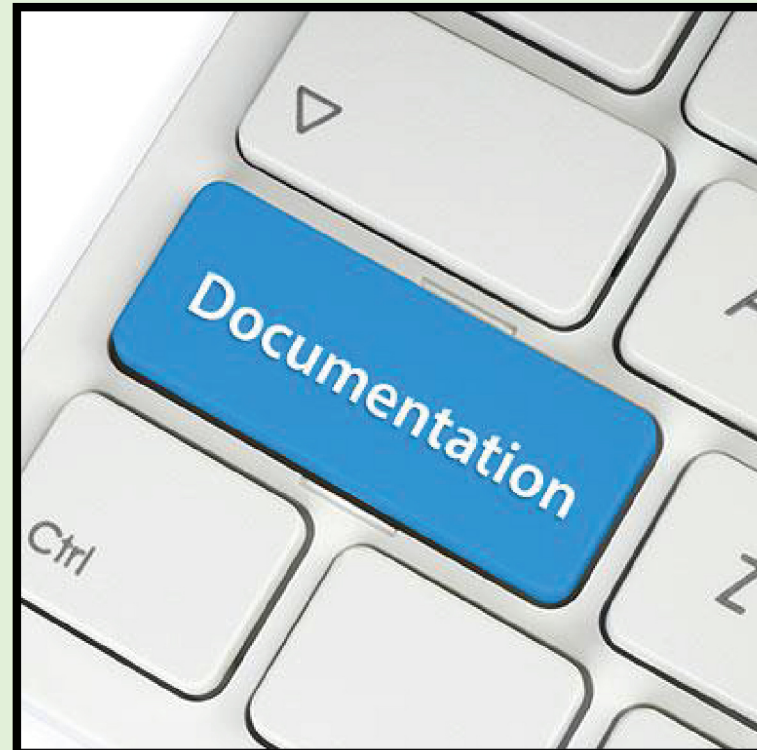
- SPECIAL DEDICATED SPACE IN DEPOT FOR BRISK.
- LABOUR WHO EAGER TO WORK 24/7.
- ALL LABOUR AND LOADING MAN ARE TRAINED BY PO MANAGER.
- PREMISES SECURED BY CCTV CAMERA.
- ATLEAST ONE OPERATION MANAGER AND TWO SUPERVISOR
- ARE ALWAYS PRESENT IN LOADING POINT.
- SUPERVISORS ARE EXPERIENCED OVER 30 YEARS.
- ALWAYS ENSURE CLEAN AND SOUND CONTAINERS.



DOCUMENTATION



- ◆ **INDIVIDUAL DOCUMENTATION OFFICERS FOR EXPORT, IMPORT & AIR SHIPMENT.**
- ◆ **ISF AND AMS HANDLED BY EXPERT TEAM.**
- ◆ **PREPARE BILL OF LADING.**
- ◆ **SUBMISSION OF SHIPPING INSTRUCTION (SI) AND VERIFIED GROSS MASS (VGM).**
- ◆ **VERIFYING AUTHENTIC INFORMATION WITH DEPOT AND SHIPPERS.**
- ◆ **KEEPING RECORD OF ALL SHIPMENT AND FOLLOW UP WITH OPERATION AND CUSTOMERS SERVICE TEAM.**



CUSTOMER SERVICE

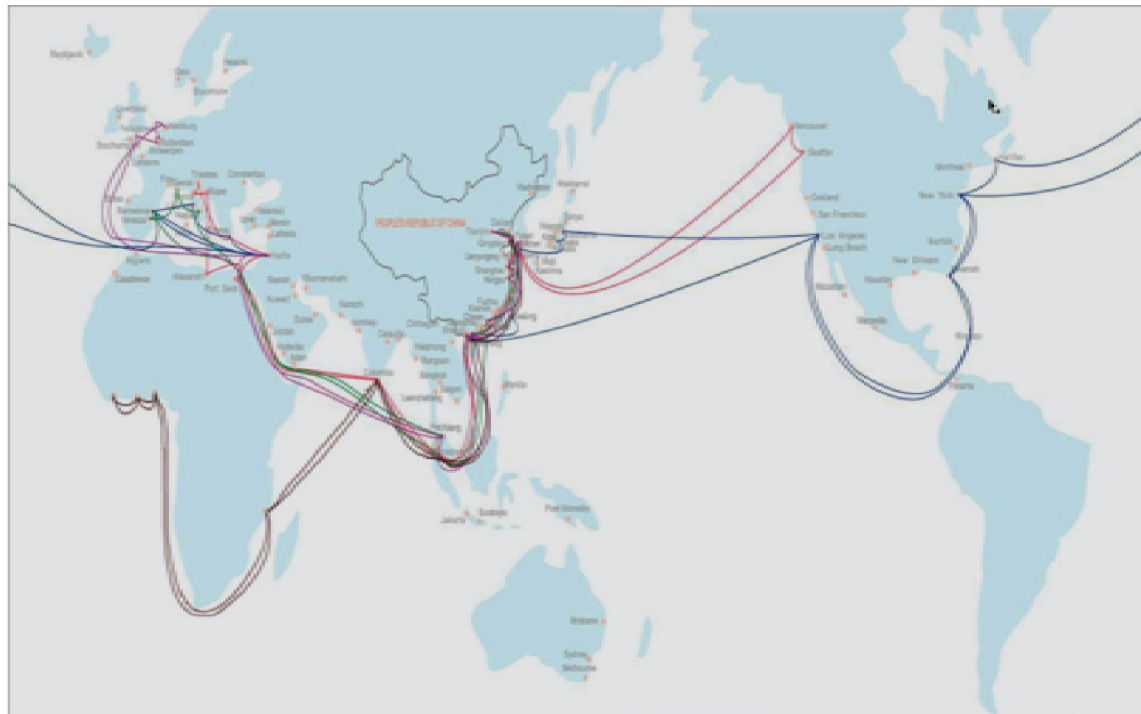
WE ALWAYS BELIEVE "SALES GOES UP AND DOWN BUT SERVICE STAYS FOREVER".



- **INDIVIDUAL CUSTOMER SERVICE OFFICER IS GIVEN TO EACH SHIPPER WHO WILL BE AVAILABLE FOR THEM 24/7.**
- **CUSTOMER SERVICE IS APPOINT TO SOLVE PROBLEM AND INTERACT WITH THE SHIPPER TO RUN THE SHIPMENT SMOOTHLY.**
- **OUR CUSTOMER SERVICE IS TRAINED TO ANSWER ALL SORT OF QUERIES BY THE SHIPPERS AND BUYERS.**
- **Maintain and file all records in accordance with company procedure.**
- **Assist the sales team with quotations and client/product knowledge.**

GLOBAL ACCESS

- Europe line
- America line
- Asia line
- Africa line
- Persian Gulf line
- Australia line



OUR CORE COMPETENCY



- **Competitive rates with major global carriers**
- **Dedicated customer service**
- **Sea Consolidation/de-consolidation**
- **In-bond air / truck service**
- **Air consolidation services, including GOH**

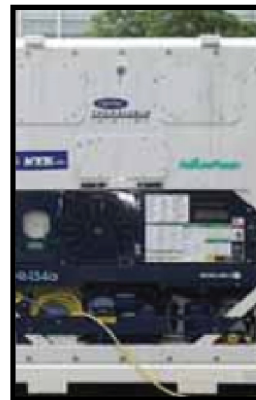
SEA FREIGHT EXPORT AND IMPORT



Full Container Load: Brisk Logistics' years of international experience ensures that you'll get the right equipment and best routing options for your FCL cargo to destinations across the globe while at the same time guaranteeing shipping costs that fit your budget need. We put our strong relationship with global and regional carriers to work for you to create the optimal service solution for all your FCL shipments.



Less than Container Load: We provide our own dedicated consolidation services to most key worldwide destinations with multiple consolidation hubs and offices. This benefits you through cost-effective and highly efficient loading operations and services.



Reefer Service:

We offer you world-class quality and reliable temperature controlled services. Our strictly monitored cold chain storage facilities also maintain your goods in the best possible condition at all times.

CHITTAGONG PORT



CARGO STUFFING AT DEPOT



CARGO STUFFING AT DEPOT





COMPANY PROFILE

Brisk Logistics International is your ideal partner for comprehensive global logistics services offering world-class ocean, land and air transportation expertise. We provide you with a diverse range of integrated solutions fully tailored to meet all your needs.

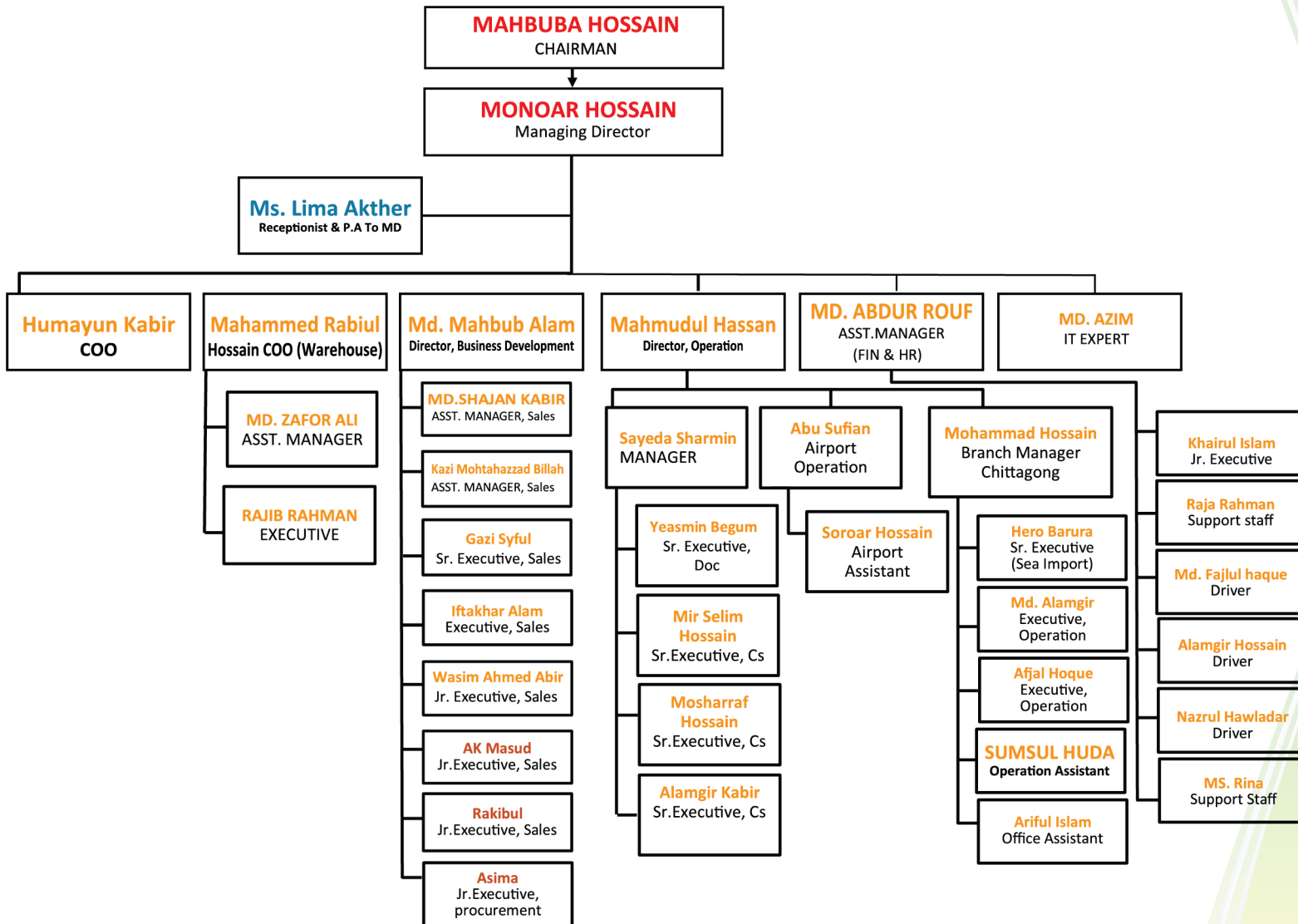
Our long-term partnerships with numerous carriers, along with sophisticated, cutting-edge information technology and extensive global networks that covers a number of countries, plus unparalleled quality service has today made Brisk Logistics International one of the world's leading international ocean and Air freight forwarding service providers.

We ensure the very finest in:

- ✦ Full Container Load (FCL) shipments,
- ✦ Less-than-Container Load (LCL) shipments,
- ✦ Supply Chain management,
- ✦ Temperature-Controlled Container Load shipments and
- ✦ Project Logistics.
- ✦ Warehousing



ORGANOGRAM





BASE STRUCTURE

- ☐ Corporate Office 4,100 sft.
- ☐ Dhaka Office 2,000 sft.
- ☐ Chittagong Office 1,600 sft.
- ☐ Dhaka Airport Office 5,00 sft.



VISION & MISSION

vision

- To offer great working place to our people so that they can give their best to the company.
- To ensure our presence everywhere in the Globe through continuous business expansion.
- To become choice of customers through innovation and continuous improvement by our people.

Mission

- To provide complete solution to all valued customers.
- To ensure our presence everywhere in the Globe through continuous business expansion.
- To become choice of customers through innovation and continuous improvement by our people.



COMPANY VALUE



Commitment

Our employees are fully committed to your individual needs. We treat your logistics related gain or loss as our own. Therefore we are constantly monitoring your freight and screening for improvements to efficiency and effectiveness.



Priority

We set clear priorities when dealing with your freight. We keep focused on forwarding your freight safely, in the shortest time and at the lowest cost possible. As the overall goal, this principle is held over all other issues.



Service at all means

As your freight forwarder, we take charge of your logistics. We support you in every aspect related to the transportation of your goods and see us not only as your contracted forwarder, but as the forwarding department of your company.



THANK YOU